



A Word From the Pastor

May Day or Mayday? One is an ancient celebration dating back to the Romans and Celts marking the beginning of summer with flowers and dancing around the maypole. The other is a distress call created in early 1920s for pilots to alert airports that there was something seriously wrong. May Day or mayday are both experienced by those facing graduation. It is both a time of celebration and the entering into a world that seems to be more uncertain and dangerous every year. Which ever it is May Day or mayday, the month of May is a time of change and transitions as the school year ends and the long summer begins.

It is said that the only thing certain is change. That doesn't make change any easier and, when that change means uncertainty about one's future, the stress can become overwhelming. Older people often tell the youth to "put on their big kid pants" or "be bold and courageous" but those same people begin to whine about the "good ole days" when their life changes. The truth is that no one likes change unless they are the ones causing the change. Even then, sometimes the change we want turns out to worse than the situation we were in before the change. No matter how much people try to avoid, ignore, or postpone change, life is always changing. The question is not how to stop change or go back to some romanticized past but rather how do we adapt and find abundant life even in the midst of change.

A psychologist from Bowling Green University argues that how easily we deal with change depends upon our "coping" mechanism. For religious people, their coping mechanism is their faith in God. Unfortunately, some organizations have a very small God. "Unless you obey certain rules or act certain ways, God will not help you." This limited view of God is both legalistic and judgmental. These are needed qualities for teaching children the basics to avoid being hurt but they fail when faced with the changes of the adult world. Adults quickly learn that the world is not black or white but gray and the words of Paul are true, "I do not understand my own actions. For I do not do what I want, but I do the very thing I hate." (Romans 7:15) When change causes this limited view of God to fail, a persons faith is challenged and their coping mechanism fails. It is during these moments of collapse that depression, addiction, and even suicide become very real possibilities.

continued on Page 2...



Psalm 139:13-14

"For you formed my inward parts; you knitted me together in my mother's womb. I praise you, for I am fearfully and wonderfully made. Wonderful are your works; my soul knows it very well."



A Word From the Pastor Continue

Finding a faith in God that is greater than the “God in a box” version offered by many quick fix religions is the beginning of the spiritual journey and the road to good mental and emotional health. Embracing the God of mystery who exists in the midst of paradox is to discover the God who is constant even in the midst of change. The paradox is a God who is fully divine and fully human, the judge and the sacrifice, the unknowable Messiah and the everyday man from Nazareth. At times people need a Father who is in control, a Son who walks, laughs, and cries with them, and a Holy Spirit who fills their heart with love, peace, and hope. It is difficult, however, to find that faith in a world that values performance over faith, money over love, and outer beauty over inner simplicity. All this takes us back to May Day or mayday.

Being a teenager and then a young adult means wave after wave of change. This change can happen in new environments without community and family support systems which causes feeling of loneliness and being lost. This change can happen surrounded by a support system which refuses to admit there is change which can cause and even greater loneliness because of the pressure to fit in. Added to this normal developmental change is the stress of a radically divided and changing world where even the adults are having difficulty coping. Is it any wonder that teen and young adult depression, addiction, and suicide is on the rise in every community from urban to rural, small to large. If the adults don't accept help from spiritual counselors and mental health professionals, why will their children? If a community focuses more on political enemies rather than the health of their own children, how can the next generation learn how to cope? The question of May Day or mayday depends on if this generation will make God and the struggles of their children a priority or if we will continue to bicker over political battles which will be forgotten in ten years. Let us celebrate the Lord of the Dance on May Day and be as compassionate as the savior of the woman caught in adultery when we hear people cry out “mayday”.

Blessings,

Pastor Mark

MAY BIRTHDAY

Jamie Wardlaw 5/1

Darlette Bloodworth 5/14

Eddie Sawyer 5/14

Stride Wardlaw 5/15

Avery Wardlaw 5/17

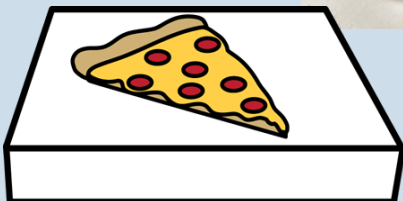
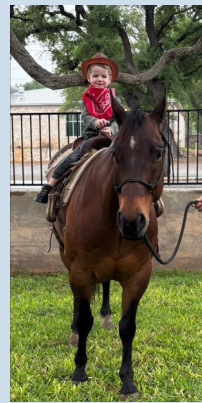
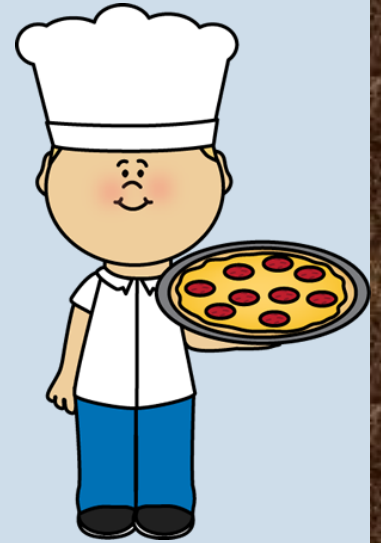
Max Howorth 5/17

Mandy Knott 5/18

Tammy Fisher 5/25

METHODIST DAY SCHOOL EVENTS

April brought a lot of fun learning opportunities for our Day School kids. We had fun learning about the real reason for Easter and Jesus' sacrifice for us. There were lots of eggs to hunt and fun pizza parties. We took our annual spring pictures with so many great smiles. Our favorite horse, Guns & Roses stopped by. Thank you Word Hudson for taking the time to do pictures with your very patient horse and providing all the fun rodeo activities. The kids absolutely loved it! Looking forward to May and all the crazy busy days ahead.



"But grow in grace, and in the knowledge of our Lord and Savior Jesus Christ."

UPCOMING EVENTS FOR MAY!

SUN	MON	TUES	WEDS	THURS	FRI	SAT
	<p>Happy Mother's Day</p>				<p>1 <i>No SISD</i> SHS - Track @ Canyon - Regional</p>	<p>2 SHS - Track @ Canyon - Regional SMS Tennis @ Reagan Co. - Dis- trict</p>
<p>3 Open Door @ 9:45AM Worship @ 11</p>	<p>4 MDS - Cinco de Mayo UMW Meeting @ 5PM <i>SHS Girls Golf @ State Tournament</i></p>	<p>5 <i>SHS Girls Golf @ State Tournament</i></p>	<p>6 MDS - Muffins for Moms Pastor's Bible Study @ 5pm</p>	<p>7 SHS Tennis @ State Tournament</p>	<p>8 <i>No SISD</i> SHS Tennis @ State Tournament</p>	<p>9</p>
<p>10 Open Door @ 9:45AM Worship @ 11 Mother's Day</p>	<p>11 MDS ONE Board Meeting 5:30PM</p>	<p>12 <i>FFA - Area 2 Con- vention</i></p>	<p>13 MDS - Doughnuts for Dads Pastor's Bible Study @ 5pm <i>FFA - Area 2 Con- vention</i></p>	<p>14</p>	<p>15 <i>No SISD</i> SHS - Track @ State Meet</p>	<p>16 <i>SHS - Track @ State Meet</i></p>
<p>17 Open Door Study @ 9:45AM Worship @ 11</p>	<p>18 MDS SISD - 2PM Dismissal</p>	<p>19 SISD - 2PM Dismissal</p>	<p>20 MDS - Graduation Pastor's Bible Study @ 5pm SISD - 2PM Dismissal</p>	<p>21 SISD - Noon Dismissal</p>	<p>22 <i>No SISD</i></p>	<p>23</p>
<p>24/31 Open Door Study @ 9:45AM Worship @ 11</p>	<p>25</p>	<p>26</p>	<p>27 Pastor's Bible Study @ 5pm</p>	<p>28</p>	<p>29</p>	<p>30</p>

CIRCUIT RIDER IS PUBLISHED BY :

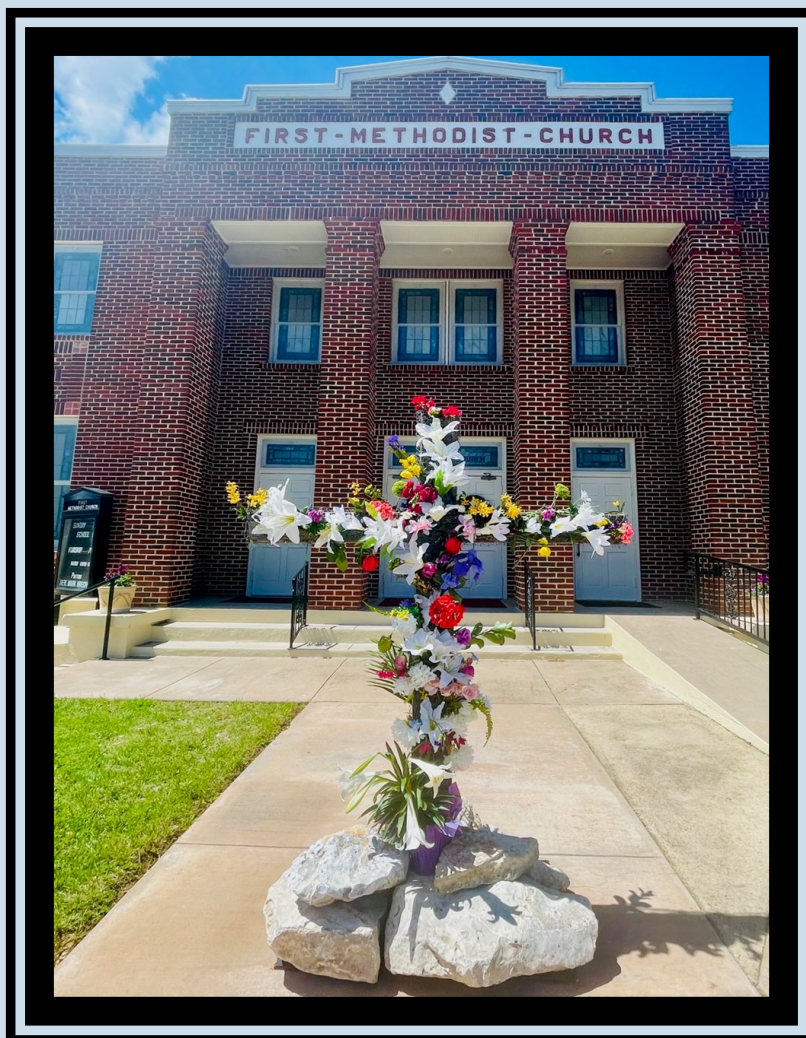
FIRST UNITED METHODIST CHURCH

PO Box 675

SONORA, TX 76950

PHONE: (325) 387-2466

WWW.SONORAFUMC.COM



SUNDAY SCHEDULE

OPEN DOOR SUNDAY SCHOOL 9:45AM
WORSHIP SERVICE 11:00 AM
*WEEKLY WORSHIP SERVICE IS BROADCAST AT 11:00 A.M.
SUNDAYS ON KHOS 92.1 AND KYXX 94.3*

FUMC SONORA STAFF

REV. MARK BRECHIN— PASTOR
VIRGIL BURGE— ONE BOARD CHAIR
PATTI BARKER— MDS DIRECTOR
DARRELL BARKER— CUSTODIAN
KENDRA VYVLECKA—

FINANCE SECRETARY AND COMMUNICATIONS DIRECTOR